

## Firmware Update Testo Thermal Imagers

Firmware update instructions for the following thermal imagers

- testo 865, testo 868, testo 871, testo 872
- testo 870
- testo 883
- testo 885, testo 890



**Please note!**

System requirements for the firmware update:

- Operating system: Microsoft Windows™ 10 (32 bit / 64 bit)
- USB 2.0
- Latest version of the PC software **IR-Soft**

If you have any further questions about the firmware update you are welcome to contact the Testo customer service department.

Please find service phone numbers and contact information at:

[www.testo.com](http://www.testo.com)

### 1. Download \*.exe-file

To update the firmware, you need the data of the current version.  
Therefore, please download the respective file from the Testo Download-Centre  
[www.testo.com/irsoft](http://www.testo.com/irsoft).

testo 865, testo 868, testo 871, testo 872	firmware-testo-865-872.exe
testo 870	firmware-testo-870.exe
testo 883	firmware-testo-883.exe
testo 885, testo 890	firmware-testo-885-890.exe

### 2. Unpacking the firmware data

By double-clicking on the downloaded file, it will be unzipped.  
Now you receive the respective file which should be used for the update:

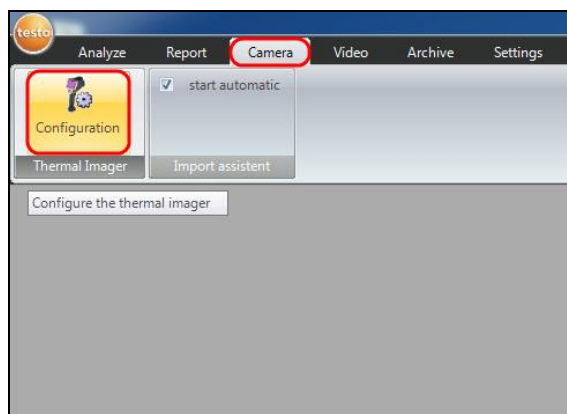
testo 865, testo 868, testo 871, testo 872	FW_T87x_VX.XX.bin
testo 870	FW_T870_VX.XX.bin
testo 883	FW_T883_VX.XX.bin
testo 885, testo 890	FW_T885T890_VX.XX.bin

### 3. Preparation of thermal imager

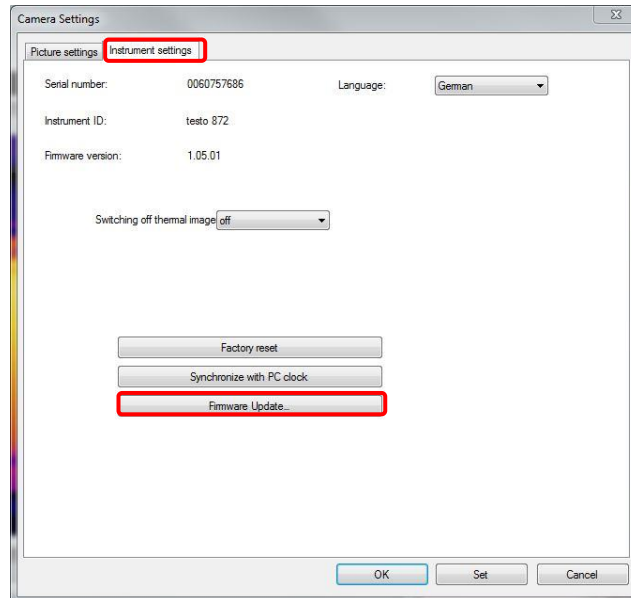
- 1) Insert a fully charged battery.
- 2) Switch on imager and wait until the firmware is completely started.
- 3) Connect imager and computer by using the USB-cable.

### 4. Execute firmware update

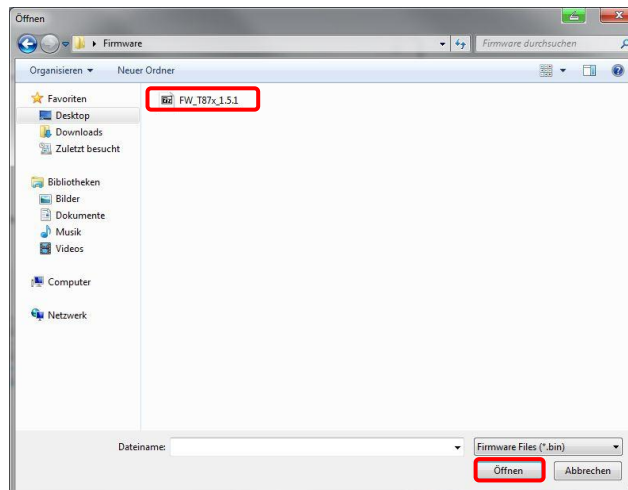
- 1) Run IRSoft and choose **Camera/Configuration**.
  - The **Instrument settings** window will appear.



- 2) Choose **Instrument settings/Firmware Update ...**
  - The **open-dialog** will appear.



- 3) Choose **respective Firmware** shown in point 2 and confirm with **Open**.
  - The firmware update is now running.
  - Afterwards the camera will automatically reboot.



Possibly the camera shows the message: “Firmware Update finished. Please restart the device.”, but don't reboot automatically.

**Procedure in this case:**

- 1) Wait about 10 seconds and turn the camera off.
- 2) Wait about 3 seconds and turn it back on.
  - The camera will show the current firmware version during start-up.